

# SWATH2stats example script

Example R code showing the usage of the SWATH2stats package. The data processed is the publicly available dataset of *S.pyogenes* (Röst et al. 2014) (<http://www.peptideatlas.org/PASS/PASS00289>). The results file 'rawOpenSwathResults\_1pcnt\_only.tsv' can be found on PeptideAtlas (<ftp://PASS00289@ftp.peptideatlas.org/./Spyogenes/results/>). This is a R Markdown file, showing the result of processing this data. The lines shaded in grey represent the R code executed during this analysis.

The SWATH2stats package can be directly installed from Bioconductor using the commands below (<http://bioconductor.org/packages/devel/bioc/html/SWATH2stats.html>).

```
if (!require("BiocManager"))
  install.packages("BiocManager")
BiocManager::install("SWATH2stats")
```

## Part 1: Loading and annotation

Load the SWATH-MS example data from the package, this is a reduced file in order to limit the file size of the package.

```
library(SWATH2stats)
library(data.table)
data('Spyogenes', package = 'SWATH2stats')
```

Alternatively the original file downloaded from the Peptide Atlas can be loaded from the working directory.

```
data <- data.frame(fread('rawOpenSwathResults_1pcnt_only.tsv', sep='\t', header=TRUE))
```

Extract the study design information from the file names. Alternatively, the study design table can be provided as an external table.

```
Study_design <- data.frame(FileName = unique(data$align_origfilename))
Study_design$Filename <- gsub(".*strep_align/(.*)_all_peakgroups.*", "\\1", Study_design$Filename)
Study_design$Condition <- gsub("(Strep.*)_Repl.*", "\\1", Study_design$Filename)
Study_design$BioReplicate <- gsub(".*Repl([[:digit:]]).*", "\\1", Study_design$Filename)
Study_design$Run <- seq_len(nrow(Study_design))
head(Study_design)
```

##		Filename	Condition	BioReplicate	Run
## 1	Strep0_Repl1_R02/split_hroest_K120808	Strep0	1	1	
## 2	Strep0_Repl2_R02/split_hroest_K120808	Strep0	2	2	
## 3	Strep10_Repl1_R02/split_hroest_K120808	Strep10	1	3	
## 4	Strep10_Repl2_R02/split_hroest_K120808	Strep10	2	4	

The SWATH-MS data is annotated using the study design table.

```
data.annotated <- sample_annotation(data, Study_design, column_file = "align_origfilename")
```

Remove the decoy peptides for a subsequent inspection of the data.

```
data.annotated.nodecoy <- subset(data.annotated, decoy==FALSE)
```

## Part 2: Analyze correlation, variation and signal

Count the different analytes for the different injections.

```
count_analytes(data.annotated.nodcocy)
```

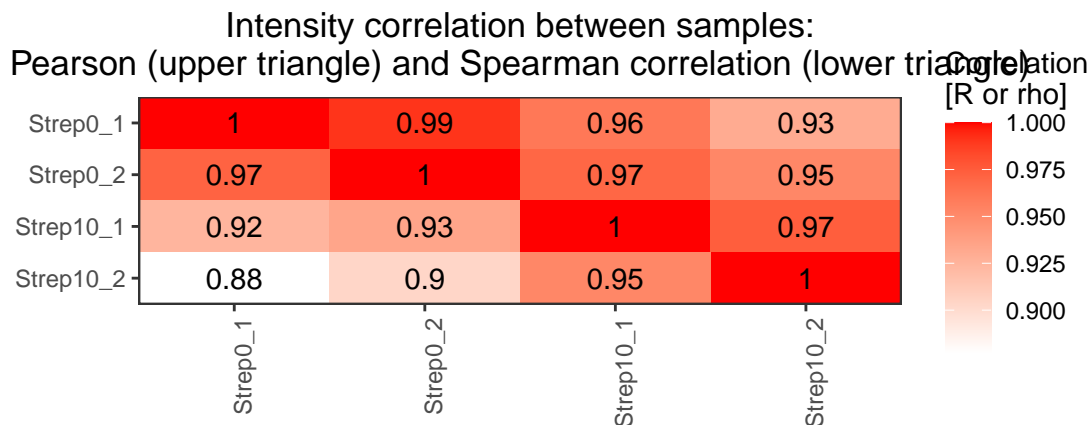
```
##      run_id transition_group_id FullPeptideName ProteinName
## 1 Strep0_1_1           10229           8377       1031
## 2 Strep0_2_2           9716           7970       1003
## 3 Strep10_1_3          8692           7138        943
## 4 Strep10_2_4          8424           6941        910
```

Plot the correlation of the signal intensity.

```
correlation <- plot_correlation_between_samples(data.annotated.nodcocy, column.values = 'Intensity')
```

```
## Warning: `aes_string()` was deprecated in ggplot2 3.0.0.
## i Please use tidy evaluation idioms with `aes()`.
## i See also `vignette("ggplot2-in-packages")` for more information.
## i The deprecated feature was likely used in the SWATH2stats package.
## Please report the issue at <https://github.com/peterblattmann/SWATH2stats>.
## This warning is displayed once every 8 hours.
## Call `lifecycle::last_lifecycle_warnings()` to see where this warning was
## generated.

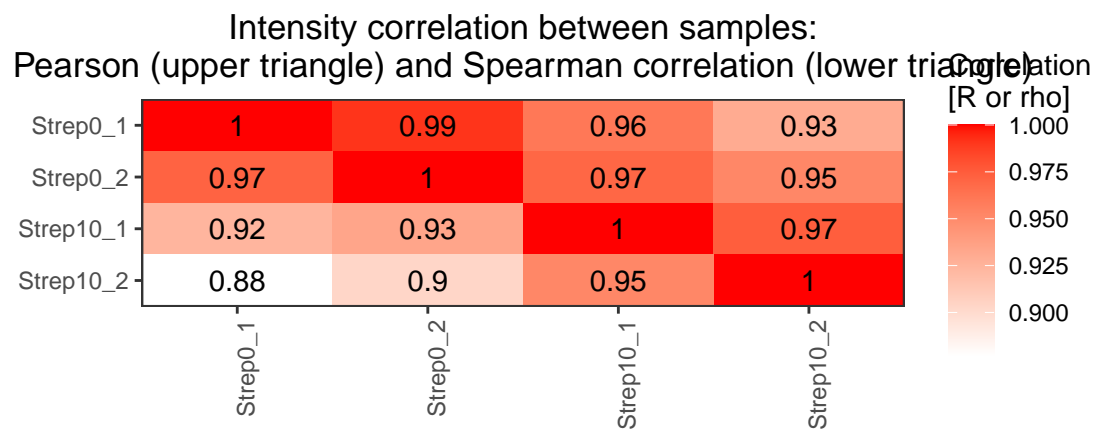
## Warning: Use of `data.plot$value` is discouraged.
## i Use `value` instead.
```



Plot the correlation of the delta\_rt, which is the deviation of the retention time from the expected retention time.

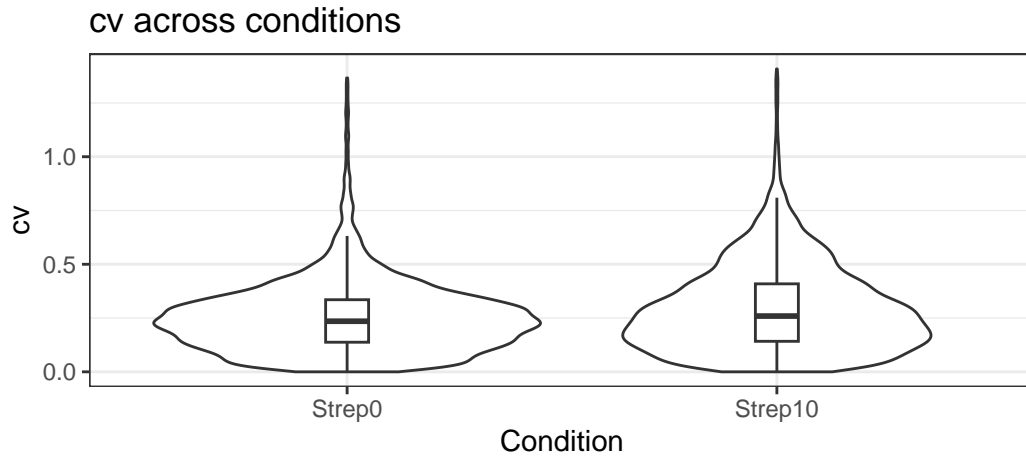
```
correlation <- plot_correlation_between_samples(data.annotated.nodcocy, column.values = 'delta_rt')
```

```
## Warning: Use of `data.plot$value` is discouraged.
## i Use `value` instead.
```



Plot the variation of the signal across replicates.

```
variation <- plot_variation(data.annotated.nodecoy)
```

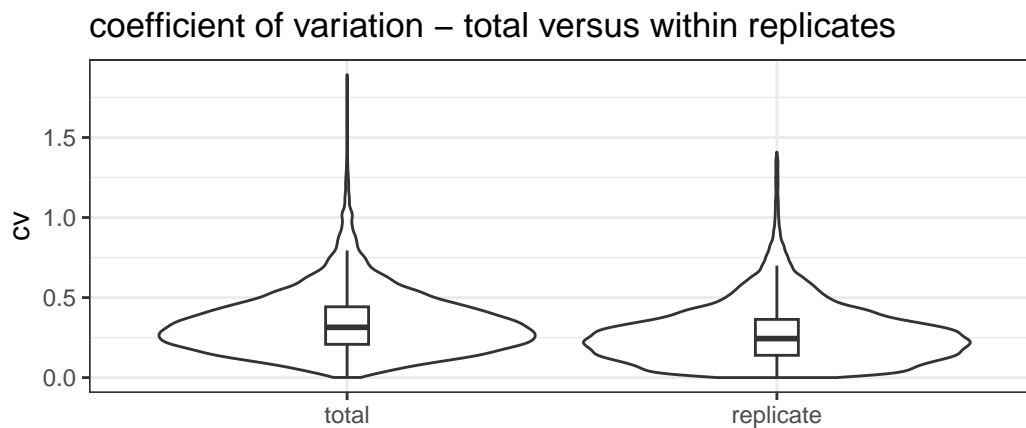


```
variation[[2]]
```

```
## Condition mode_cv mean_cv median_cv
## 1 Strep0 0.2280372 0.2545450 0.2351859
## 2 Strep10 0.1706934 0.2947144 0.2592725
```

Plot the total variation versus variation within replicates.

```
variation_total <- plot_variation_vs_total(data.annotated.nodecoy)
```



```
variation_total[[2]]
```

```
## scope mode_cv mean_cv median_cv
## 1 replicate 0.2209867 0.2728681 0.2438041
## 2 total 0.2655678 0.3439050 0.3139993
```

Calculate the summed signal per peptide and protein across samples.

```
peptide_signal <- write_matrix_peptides(data.annotated.nodecoy)
protein_signal <- write_matrix_proteins(data.annotated.nodecoy)
head(protein_signal)
```

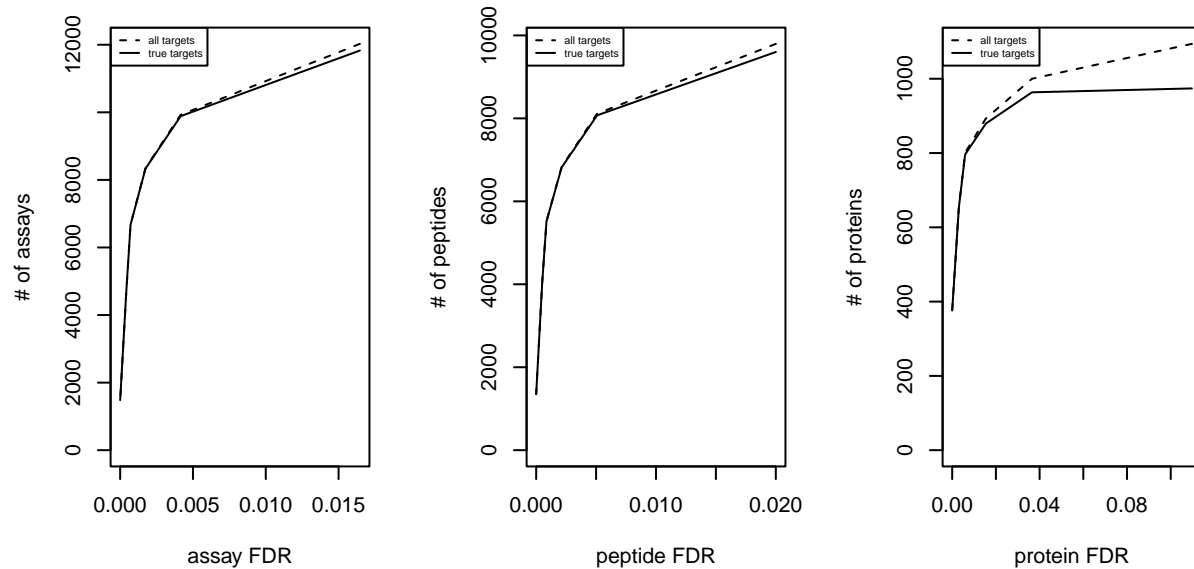
```
## ProteinName Strep0_1_1 Strep0_2_2 Strep10_1_3 Strep10_2_4
## 1 Spyo_Exp3652_DDB_SeqID_1571119 265206 163326 51831 45021
## 2 Spyo_Exp3652_DDB_SeqID_1579753 185725 150672 21483 144314
```

## 3	Spyo_Exp3652_DDB_SeqID_1631459	176686	132415	42165	32735
## 4	Spyo_Exp3652_DDB_SeqID_1640263	3310	6617	98550	45169
## 5	Spyo_Exp3652_DDB_SeqID_1709452	852502	747772	503581	504761
## 6	Spyo_Exp3652_DDB_SeqID_17244480	17506	29578	7607	2482

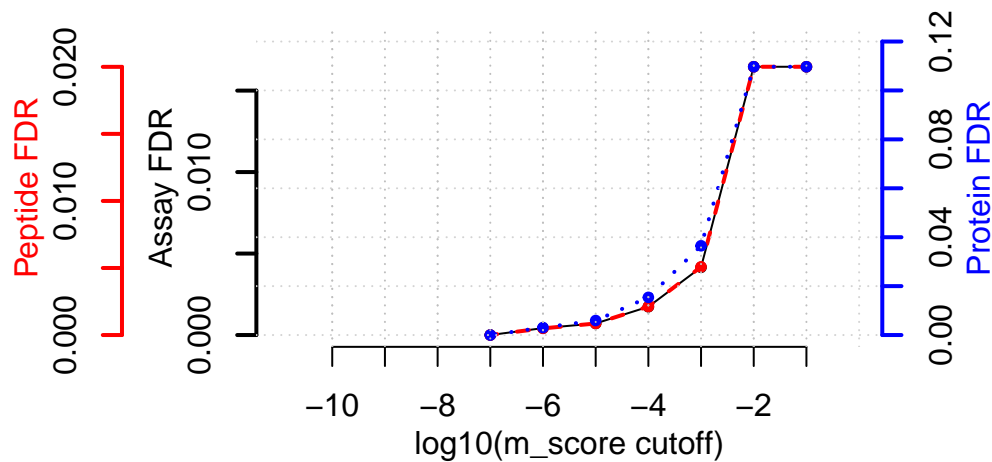
## Part 3: FDR estimation

Estimate the overall FDR across runs using a target decoy strategy.

```
par(mfrow = c(1, 3))
fdr_target_decoy <- assess_fdr_overall(data.annotated, n_range = 10,
                                       FFT = 0.25, output = 'Rconsole')
```



**Global m-score cutoff connectivity to FDR quality**



According to this FDR estimation one would need to filter the data with a lower mscore threshold to reach an overall protein FDR of 5%.

```
mscore4protfdr(data, FFT = 0.25, fdr_target = 0.05)
```

```
## Target protein FDR:0.05
## Required overall m-score cutoff:0.0017783
## achieving protein FDR =0.0488
## [1] 0.001778279
```

## Part 4: Filtering

Filter data for values that pass the 0.001 mscore criteria in at least two replicates of one condition.

```
data.filtered <- filter_mscore_condition(data.annotated, 0.001, n_replica = 2)
```

```
## Fraction of peptides selected: 0.67
```

```
## Dimension difference: 7226, 0
```

Select only the 10 peptides showing strongest signal per protein.

```
data.filtered2 <- filter_on_max_peptides(data.filtered, n_peptides = 10)
```

```
## Before filtering:
```

```
##   Number of proteins: 884
```

```
##   Number of peptides: 6594
```

```
##
```

```
## Percentage of peptides removed: 29.6%
```

```
##
```

```
## After filtering:
```

```
##   Number of proteins: 884
```

```
##   Number of peptides: 4642
```

Filter for proteins that are supported by at least two peptides.

```
data.filtered3 <- filter_on_min_peptides(data.filtered2, n_peptides = 2)
```

```
## Before filtering:
##   Number of proteins: 884
##   Number of peptides: 4642
##
## Percentage of peptides removed: 3.6%
##
## After filtering:
##   Number of proteins: 717
##   Number of peptides: 4475
```

## Part 5: Conversion

Convert the data into a transition-level format (one row per transition measured).

```
data.transition <- disaggregate(data.filtered3)
```

```
## The library contains 6 transitions per precursor.
##
## The data table was transformed into a table containing one row per transition.
```

Convert the data into the format required by MSstats.

```
MSstats.input <- convert4MSstats(data.transition)
```

```
## One or several columns required by MSstats were not in the data.
##           The columns were created and filled with NAs.
## Missing columns: ProductCharge, IsotopeLabelType
## IsotopeLabelType was filled with light.
## Warning in convert4MSstats(data.transition): Intensity values that were 0, were
## replaced by NA
```

```
head(MSstats.input)
```

```
##           ProteinName      PeptideSequence PrecursorCharge
## 1 Spyo_Exp3652_DDB_SeqID_1571119 AEAAIYQFLEAIGENPNR      3
## 2 Spyo_Exp3652_DDB_SeqID_1571119 AEAAIYQFLEAIGENPNR      3
## 3 Spyo_Exp3652_DDB_SeqID_1571119 AEAAIYQFLEAIGENPNR      3
## 4 Spyo_Exp3652_DDB_SeqID_1571119 AEAAIYQFLEAIGENPNR      3
## 5 Spyo_Exp3652_DDB_SeqID_1571119      AHIAYLPSDGR        2
## 6 Spyo_Exp3652_DDB_SeqID_1571119      AHIAYLPSDGR        2
##           FragmentIon ProductCharge IsotopeLabelType Intensity
## 1 105801_AEAAIYQFLEAIGENPNR/3_y6      NA          light    4752
## 2 105801_AEAAIYQFLEAIGENPNR/3_y6      NA          light    6144
## 3 105801_AEAAIYQFLEAIGENPNR/3_y6      NA          light    3722
## 4 105801_AEAAIYQFLEAIGENPNR/3_y6      NA          light    6624
## 5      118149_AHIAYLPSDGR/2_y8      NA          light    4036
## 6      118149_AHIAYLPSDGR/2_y8      NA          light    1642
## BioReplicate Condition Run
## 1           2      Strep0    2
## 2           1      Strep10   3
## 3           2      Strep10   4
## 4           1      Strep0    1
```



```
## 5          1      Strep0      1
## 6          1      Strep10     3
```

Convert the data into the format required by mapDIA.

```
mapDIA.input <- convert4mapDIA(data.transition)
head(mapDIA.input)
```

```
##              ProteinName      PeptideSequence
## 1 Spyo_Exp3652_DDB_SeqID_1571119 AEAAIYQFLEAIGENPNR
## 2 Spyo_Exp3652_DDB_SeqID_1571119 AHIAYLPSDGR
## 3 Spyo_Exp3652_DDB_SeqID_1571119 EEFTAVFK
## 4 Spyo_Exp3652_DDB_SeqID_1571119 EKAEAAIYQFLEAIGENPNR
## 5 Spyo_Exp3652_DDB_SeqID_1571119 EQHEDVVIVK
## 6 Spyo_Exp3652_DDB_SeqID_1571119 LTSQIADALVEALNPK
##              FragmentIon Strep0_1 Strep0_2 Strep10_1 Strep10_2
## 1 105801_AEAAIYQFLEAIGENPNR/3_y6 6624 4752 6144 3722
## 2 118149_AHIAYLPSDGR/2_y8 4036 2405 1642 720
## 3 35179_EEFTAVFK/2_y5 2307 1541 1561 NaN
## 4 28903_EKAEAAIYQFLEAIGENPNR/3_y6 3410 2185 NaN 1984
## 5 73581_EQHEDVVIVK/2_b6 2423 1343 NaN NaN
## 6 115497_LTSQIADALVEALNPK/2_y11 6553 6349 NaN NaN
```

Convert the data into the format required by aLFQ.

```
aLFQ.input <- convert4aLFQ(data.transition)
```

```
## Checking the integrity of the transitions takes a lot of time.
##              To speed up consider changing the option.
```

```
head(aLFQ.input)
```

```
##      run_id      protein_id      peptide_id
## 1 Strep0_2_2 Spyo_Exp3652_DDB_SeqID_1571119 AEAAIYQFLEAIGENPNR
## 2 Strep10_1_3 Spyo_Exp3652_DDB_SeqID_1571119 AEAAIYQFLEAIGENPNR
## 3 Strep10_2_4 Spyo_Exp3652_DDB_SeqID_1571119 AEAAIYQFLEAIGENPNR
## 4 Strep0_1_1 Spyo_Exp3652_DDB_SeqID_1571119 AEAAIYQFLEAIGENPNR
## 5 Strep0_1_1 Spyo_Exp3652_DDB_SeqID_1571119 AHIAYLPSDGR
## 6 Strep10_1_3 Spyo_Exp3652_DDB_SeqID_1571119 AHIAYLPSDGR
##              transition_id      peptide_sequence
## 1 AEAAIYQFLEAIGENPNR 105801_AEAAIYQFLEAIGENPNR/3_y6 AEAAIYQFLEAIGENPNR
## 2 AEAAIYQFLEAIGENPNR 105801_AEAAIYQFLEAIGENPNR/3_y6 AEAAIYQFLEAIGENPNR
## 3 AEAAIYQFLEAIGENPNR 105801_AEAAIYQFLEAIGENPNR/3_y6 AEAAIYQFLEAIGENPNR
## 4 AEAAIYQFLEAIGENPNR 105801_AEAAIYQFLEAIGENPNR/3_y6 AEAAIYQFLEAIGENPNR
## 5 AHIAYLPSDGR 118149_AHIAYLPSDGR/2_y8 AHIAYLPSDGR
## 6 AHIAYLPSDGR 118149_AHIAYLPSDGR/2_y8 AHIAYLPSDGR
## precursor_charge transition_intensity concentration
## 1          3          4752          ?
## 2          3          6144          ?
## 3          3          3722          ?
## 4          3          6624          ?
## 5          2          4036          ?
## 6          2          1642          ?
```

Session info on the R version and packages used.

```
sessionInfo()
```

```

## R version 4.5.1 Patched (2025-09-10 r88807)
## Platform: x86_64-apple-darwin20
## Running under: macOS Monterey 12.7.6
##
## Matrix products: default
## BLAS:   /Library/Frameworks/R.framework/Versions/4.5-x86_64/Resources/lib/libRblas.0.dylib
## LAPACK: /Library/Frameworks/R.framework/Versions/4.5-x86_64/Resources/lib/libRlapack.dylib; LAPACK
##
## locale:
## [1] C/en_US.UTF-8/en_US.UTF-8/C/en_US.UTF-8/en_US.UTF-8
##
## time zone: America/New_York
## tzcode source: internal
##
## attached base packages:
## [1] stats      graphics  grDevices  utils      datasets  methods    base
##
## other attached packages:
## [1] data.table_1.17.8  SWATH2stats_1.39.1
##
## loaded via a namespace (and not attached):
## [1] KEGGREST_1.49.1      gtable_0.3.6          xfun_0.53
## [4] ggplot2_4.0.0        httr2_1.2.1           Biobase_2.69.1
## [7] vctrs_0.6.5          tools_4.5.1           generics_0.1.4
## [10] stats4_4.5.1         curl_7.0.0            tibble_3.3.0
## [13] AnnotationDbi_1.71.1 RSQLite_2.4.3         blob_1.2.4
## [16] pkgconfig_2.0.3      dbplyr_2.5.1          RColorBrewer_1.1-3
## [19] S7_0.2.0             S4Vectors_0.47.4     lifecycle_1.0.4
## [22] compiler_4.5.1       farver_2.1.2          stringr_1.5.2
## [25] Biostrings_2.77.2    progress_1.2.3        tinytex_0.57
## [28] Seqinfo_0.99.2       htmltools_0.5.8.1    yaml_2.3.10
## [31] pillar_1.11.1        crayon_1.5.3          cachem_1.1.0
## [34] tidyselect_1.2.1     digest_0.6.37         stringi_1.8.7
## [37] dplyr_1.1.4          reshape2_1.4.4        labeling_0.4.3
## [40] biomaRt_2.65.16      fastmap_1.2.0         grid_4.5.1
## [43] cli_3.6.5            magrittr_2.0.4        dichromat_2.0-0.1
## [46] withr_3.0.2          prettyunits_1.2.0     filelock_1.0.3
## [49] scales_1.4.0         rappdirs_0.3.3        bit64_4.6.0-1
## [52] rmarkdown_2.30       XVector_0.49.1        httr_1.4.7
## [55] bit_4.6.0            png_0.1-8             hms_1.1.3
## [58] memoise_2.0.1        evaluate_1.0.5        knitr_1.50
## [61] IRanges_2.43.5       BiocFileCache_2.99.6  rlang_1.1.6
## [64] Rcpp_1.1.0           glue_1.8.0            DBI_1.2.3
## [67] formatR_1.14         BiocGenerics_0.55.3   R6_2.6.1
## [70] plyr_1.8.9

```